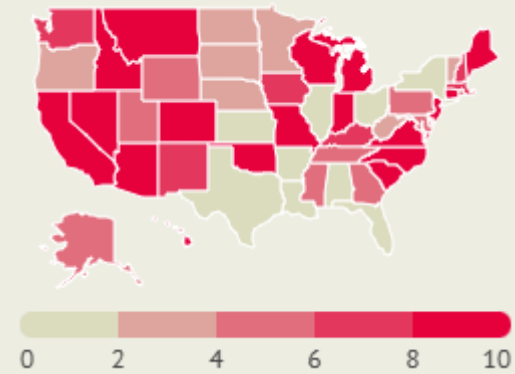


Rock Creek Analytics, LLC

CORE CAPABILITIES

We provide services in the areas of data analytics, financial modeling, demand analysis and development of web-based tools. Our expertise areas include:

- Financial and economic analysis: discounted cash flow modeling, NPV and IRR analyses
- Public-private partnerships: financing mechanisms, delivery options and institutional restructuring
- Risk analysis: uncertainty analysis, risk matrix, scenario analysis, Monte Carlo simulations
- Data analytics: statistical analysis and modeling of large-scale data sets, visualization

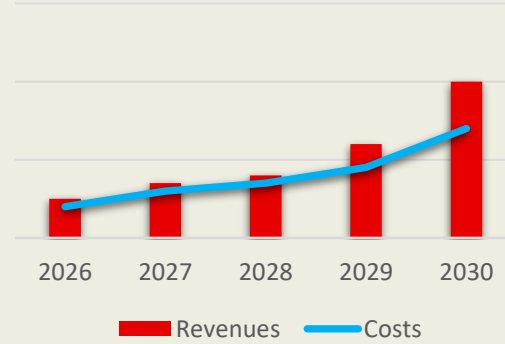


GENERAL INFORMATION

Year Incorporated: 2017
 State of Incorporation: Maryland
 Corporation Type: LLC
 DUNS Number: 080821241
 Certifications: MBE/DBE/SBE (Maryland)
 NAICS Codes: 541511, 541611, 541990

EXPERTISE

- **Investment Analysis:** We create detailed models to help determine the financial viability and risk associated with infrastructure investments and develop strategies to optimize schedules and costs.



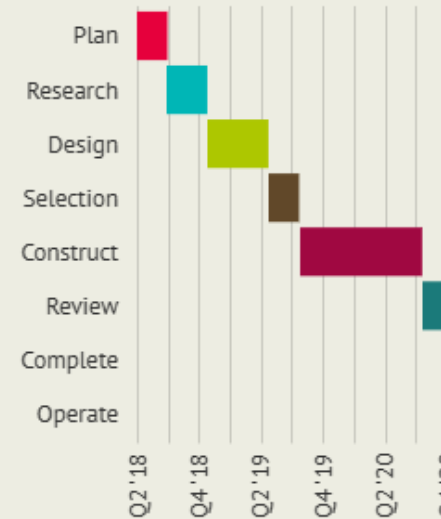
- **Business Planning / Risk Analysis:** We help create business plans for infrastructure assets to determine how the asset will be developed, financed, constructed and operated, and assess the key risks that can cause schedule or cost over-runs.

- **Geospatial Analysis:** We are experts at undertaking geospatial analysis to find geographic patterns in data, identify hot-spots, clusters, areas of concern and insights by combing through hundreds of data layers (such as weather data, demographic data, land use data, satellite imagery, etc.)



- **Due Diligence:** We support developers and financiers in their due diligence reviews of demand and cost estimates, permitting required, comprehensive risk analyses, and project schedules.

- **Demand Forecasting:** Demand modeling and forecasting is one of our core competencies. We have worked in this space for over 20 years and have specific expertise in modeling of transport facilities such as highways, toll roads, ports, transit systems and rail roads.



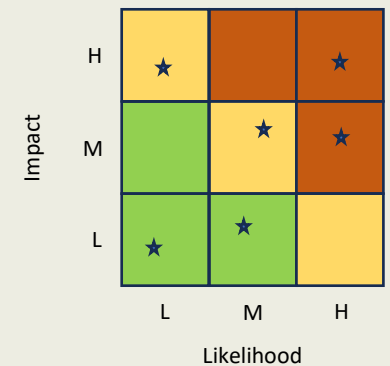
CONTACT

Rock Creek Analytics, LLC
 2702 Spencer Road
 Chevy Chase, Maryland 20815

REPRESENTATIVE PROJECTS

- Private client: Business plan for a new port in South America
- Private client: Quantitative financial modeling for a real estate hedge fund
- Private client: Predictive data analytics and dashboard development for a commercial real estate start-up
- Federal Government: Data analytics of insurance policies and claims for DHS/FEMA
- Federal Government: Data analytics for Federal Performance Improvement Steering Council
- Private client: Financial modeling for power projects (solar / conventional) worldwide
- Private client: Financial model for a new port in the Caribbean
- Private client: Due diligence of acquisition of an US construction company
- Private client: Assistance to the Independent Engineer for toll roads in Dominican Republic

Risk Analysis Framework



Phone: +1 (202) 413 3089
 Email: info@RockCreekAnalytics.com
 Web: www.RockCreekAnalytics.com